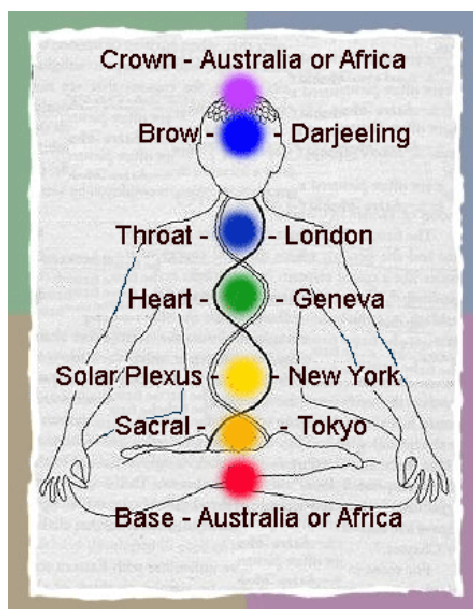


# FIVE CITIES – FIVE WORLD CHAKRAS

(Version 2)

By Leoni Hodgson March 2014

PMAFA, DMNZAS, MSE (Psych), PhD Esotericism



Individual man has an energy field or web that underlies his physical body. Within the web there are seven main force centres through which energy is received from the outer world, distributed through the body and then eliminated. Similarly, humanity has an etheric web and on five of its force centres, cities have been constructed. Alice Bailey in her book “Destiny of the Nations” named the cities, but did not relate them to any particular chakras. Since then students have been trying to match the cities with the chakras. This is another attempt.

## 1. Section of text to be analysed

These energies which we have been considering are released into our planetary life through the medium of certain great inlets. At this time there are five such inlets, scattered over the world. Wherever one of these inlets for spiritual force is found, there will also be present a city of spiritual importance in the same location. These five points of spiritual influx are:

- |               |  |
|---------------|--|
| 1. London     | For the British Empire.                              |
| 2. New York   | For the Western Hemisphere.                          |
| 3. Geneva     | For Europe, including the U.S.S.R.                   |
| 4. Tokyo      | For the Far East.                                    |
| 5. Darjeeling | For India and the greater part of Asia. <sup>1</sup> |

The five cities .. are correspondence in the planetary body to the four centres up the spine and the Ajna Centre.. <sup>2</sup>

## 2. Overview of the etheric web and the seven major centres or chakras.

The etheric or fiery web of space is the energy field upon which all forms in nature are constructed. There are seven major centres or chakras in the etheric body. They receive energy from various sources (both higher and lower) and distribute these forces into the region of the body which they control. The following list relates to a human being and shows the relation between each of the seven chakras and man's nature.

- |                            |             |  |
|----------------------------|-------------|--|
| 1. Head centre             | 1000 petals | Monad. Spiritual Life. Will and Power. .       |
| 2. Heart Centre            | 12 petals   | Soul. Consciousness. Love and Wisdom.          |
| 3. Ajna Centre             | 96 petals   | Integrated personality. Intelligent Activity.. |
| 4. Throat Centre           | 16 petals   | Mind. Connects man to the mental plane.        |
| 5. Solar Plexus Centre     | 10 petals   | Emotion. Connects man to the astral plane.     |
| 6. Sacral Centre           | 6 petals    | Physical. [Sex, materialism <sup>3</sup> ]     |
| 7. Centre at base of spine | 4 petals    | Life itself. <sup>4</sup>                      |

Primitive and average man works primarily through the three lower centres, intelligent man with the lower and the throat and ajna centres, while advanced man works primarily through the higher centres. The evolutionary goal for man is to raise his consciousness gradually through the chakras, until self-control is anchored in the Crown or Head chakra, the centre controlled ultimately by the Monad. A similar shift must occur in humanity collectively, and this will demonstrate through the chakra-cities.

### 3. There are seven major centres in the etheric field, but only five cities are given.

Of the seven centres, Bailey said that only five city-centres have so far been vitalised. This is because of the place humanity currently stands in its evolution - in the 5<sup>th</sup> "Root Race". The Law of Correspondences is operational here:- 5th Root Race – 5 city-chakras stimulated.

As this is the 'Aryan'<sup>5</sup> (LH: 5th) race these five centres, these five focal points of spiritual energy, are being abnormally and deliberately stimulated and vitalized.<sup>6</sup>

In the 6<sup>th</sup> race the sixth centre will be vitalised, and in the 7<sup>th</sup> Race the seventh centre. Here is an overview of the vitalisation of chakras in each race.

- In the 1<sup>st</sup> Root Race, the Base Chakra comes alive – it carries life to the physical form, and gives “the will to live.” It has not yet opened – the serpent of matter lies coiled and asleep.
- In the 2<sup>nd</sup> Race, a connection is made to the Heart Centre in which the thread of life is anchored.
- In the 3<sup>rd</sup> Race the Sacral Centre fires up man’s sexual and material cravings.
- In the 4<sup>th</sup> Race the Solar Plexus centre gives man his emotional desires.
- In the 5<sup>th</sup>, the Throat Centre awakens man’s mind. The Ajna Centre also begins to become active, producing integrated and creative personalities<sup>7</sup>.
- In the 6<sup>th</sup> Race, the Heart Centre is fully awakened.
- In the 7<sup>th</sup> Race the Crown centre awakens<sup>8</sup>. It brings the Base Centre into full activity<sup>9</sup>. The serpent Kundalini rises up the spine to the Crown, fusing all intermediary centres.<sup>10</sup> At this stage man's highest aspect - the monad, is in full control of its human.

There are five spinal centres - base, sacral, solar plexus, heart and throat. But Bailey included the Ajna Centre in her list of five cities.

The five cities .. are the correspondence in the planetary body to the four centres up the spine and the Ajna Centre..<sup>11</sup>

This means that one of the spinal centres is omitted, but which one? The answer is found by studying the evolution through the chakras. A parallel development will take place in the cities. In the previous list we see that although the Base Centre is the first to be awakened, it is the last one to be fully aroused, *after* the head centre is fully awakened.

The centre at the base of the spine is the last one to be aroused into full functioning activity, and is thus aroused only when the head centre is awakened and alive<sup>12</sup>.

Bailey also said:

The base of the spine is practically entirely quiescent, except in connection with its pranic effects upon the form life, engendering the will to live, the urge to survival and the vitalisation of forms<sup>13</sup>

As a result I am hypothesising that the Base Chakra is omitted from Bailey’s list of five cities. This is confirmed when the wording in the quote “*The five cities .. are the correspondence in the planetary body to the four centres up the spine...*” are examined. The lowest chakra is called “the centre at the base of the spine.” It is not one of the centres “up” the spine. A minor but important point.



## CITY – CHAKRA SELECTION AND JUSTIFICATIONS

In this section, justifications are made for each city-chakra selection. Each city should demonstrate the qualities associated with the chakra which it represents, and so should the people in the region/ nation/ continent, which the chakra governs.

1. Darjeeling – Ajna Centre
2. Geneva – Heart Centre
3. London – Throat Centre
4. New York – Solar Plexus
5. Tokyo - Sacral

### 1. DARJEELING, AJNA CENTRE, THE PERSONALITY



According to Bailey, Darjeeling and Geneva are purer channels for spiritual force, making it easy to place them as the cities representing the two higher chakras in the list of five – the Ajna and the Heart. The Soul – the subjective force working through man, works through the higher centres. This leaves London, New York and Tokyo as candidates for the lower three chakras. The following quote is important:

Geneva and Darjeeling are two centres through which pure spiritual energy can be directed with more facility than through the other three; they, therefore, constitute the higher points of their respective triangles. They are also more subjective in their influence than are London, New York or Tokyo <sup>14</sup>.

#### Points which link the Ajna Centre with Darjeeling

1. Venus (intelligent wisdom) rules the Ajna Centre<sup>15</sup>, and its task is to take the mind, and transmute it into wisdom through love <sup>16</sup>.

Spreading the Ageless Wisdom is India's/ Darjeeling's spiritual task. India 'hides the light'<sup>17</sup> of wisdom which others seek. Darjeeling is on the Wisdom Ray. Westerners such as Helena Blavatsky came, took, and spread the light of wisdom to the world. As a consequence, great numbers of people look to India with love, as the source of spiritual enlightenment. This matches Darjeeling with the Ajna Centre.

2. The Ajna centre is a fusion centre<sup>18</sup>. It gathers in the force of the lower centres, fusing them into an integrated personality.

India is a country that is fusing the East with the West. It attracts spiritual seekers from the West in great numbers. To further the work of world fusion, Darjeeling/ India needs to strengthen links with the lower centres - Geneva, New York and Tokyo. It already has a strong link to London, forged during the period of the British Raj. When synthesis occurs, then Darjeeling will transfer these energies to the head centre.

3. The 1<sup>st</sup> ray streams in via the Crown Centre, to be received by the Ajna.

The 1<sup>st</sup> Ray of Will and Power conditions India, 'Darjeeling'<sup>19</sup> and the spiritual centre Shamballa. Darjeeling's destiny as the global Ajna Centre is to receive Shamballa force pouring from the global head centre. When this occurs, a great spiritual light will be seen. Bailey said:

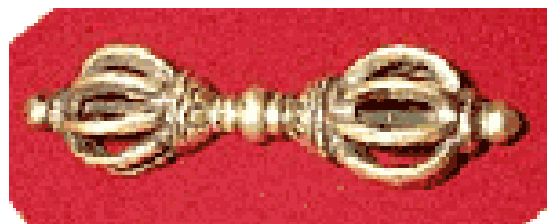
The keynote of India is "I hide the light" .. When the intent and purpose of the great Life which works through Shamballa is carried out and is in process of expression, a light will be revealed which has never yet been seen or known.. the Light of Life itself <sup>20</sup>."

4. The Ajna Centre distributes Ray 4. <sup>21</sup> Scorpio governs Darjeeling, and it carries Ray 4<sup>22</sup>, the only one of the five cities to do so. This links the Ajna Centre and Darjeeling.
5. Darjeeling is the "youngest city" of the five, established in the 1800's during the British Raj, as a get-away from the summer heat on the plains. This fits with the fact that in the sequence of chakra development, the Ajna Centre is brought to full development after the lower centres. It is also a very small city compared to the others, perhaps reflecting the fact that the numbers of people on Earth who have integrated their personalities and are fusing it with their souls – in which the Ajna is very implicated; are a much smaller group.
6. Darjeeling is located in a most sacred place on earth – the foothills of the Himalayas. Many members of the Spiritual Hierarchy reside in the Himalayas. Darjeeling is very close to the Brotherhood. The Spiritual Hierarchy currently symbolises the Head Centre of humanity<sup>23</sup> and the Ajna Centre is close to the Head Centre.

The centre in Darjeeling is what is termed occultly "vibrating", but this is in response to the relative nearness and propinquity of the Himalayan Brotherhood.<sup>24</sup>

If the Crown Centre is the King Centre, then Darjeeling is its Queen. The latter is affectionately known as "the Queen of the Hills". <sup>25</sup>

6. Darjeeling derives from 'Dorjeeling' meaning the place of the Dorjee. The famous Buddhist Monastery standing at the top of the Observatory hill was known by this name<sup>26</sup>. In Buddhism the vajra or dorje is the symbol of Vajrayana, one of the three major branches of Buddhism, the "*Thunderbolt Way*" or "*Diamond Way*" and can imply the thunderbolt experience of enlightenment. <sup>27</sup> Here is a photo of a dorje.



The description given by Bailey for the Ajna Centre is: "Two real petals.. composed of 96 lesser petals.. They spread out like the wings of an airplane to the right and left of the head" <sup>28</sup>. One can see that the dorje is good symbol of the Ajna Centre, linking Darjeeling with the Ajna.

7. Darjeeling/ India's Global Task is to act as an integrating and a spiritual maturing point for all the people of the world. The work of spreading the Ageless Wisdom has been going steadily forward for over a century, with excellent results. Darjeeling's closest ally in this work is London/ England, the hypothetical global Throat Centre. They are close because both England and Darjeeling have their souls on the Wisdom Ray. Additionally, the Power Ray is centred in London <sup>29</sup>, and it is the soul ray of India and the force centred in Darjeeling <sup>30</sup>. England was central in spreading the Ageless Wisdom emanating from India to the west, and this created the back-current of spiritual treks made by so many, back to India. Thus London (Throat) radiated the Wisdom to the lower centres, and is doing its job of transferring force back from the lower centres, to Darjeeling (Ajna).



## 2. GENEVA, THE HEART CHAKRA, DEVELOPMENT OF LOVE AND WISDOM



1. The Heart Centre distributes the 2<sup>nd</sup> Ray of Love and Wisdom. This is the ray focused in Geneva, although its expression is ineffectual at present we are told. The map shows Switzerland's/ Geneva's place at the 'heart' of Europe.



2. The function of the Heart Centre is to spread love, and wisdom, and to bring people together in union and goodwill, so that they can be "fused" together in a harmonious relationship.

This is Geneva's spiritual task as well. Its esoteric motto is "I seek to fuse, to blend and serve. Today its name is synonymous with all these fine qualities. It is commonly called "The Peace Capital", being a worldwide centre for diplomacy and international cooperation, and having numerous international organisations, including the headquarters of many of the agencies of the United Nations and the Red Cross. It is also the place where the Geneva Conventions were signed, which chiefly concern the treatment of wartime non-combatants and prisoners of war.

3. Geneva's exoteric motto "after the darkness, the light" was formulated during the Reformation, and it affirms the need to overcome the darkness of evil and ignorance and strive towards the light of justice and freedom. Thus in the Coat of Arms we see the Sun (Spirit) rising in victory – the Sun being the symbol of Leo, the sign governing Geneva's soul.

We also see a dragon in the Arms, a symbol of the power ray. Geneva has a Ray 1 Soul, which has enabled it to take the lead in international affairs.

6. Lake Geneva and Geneva itself are exceedingly beautiful. This is to be expected in a region which is a channel for Divine Love. Geneva is sometimes called the City on the Lake and water is related to compassion and love.



7. Geneva's Global Task: as the planetary Heart Centre, Geneva is progressing well, and has established itself as the world's peace centre. But it still has a long way to go. The global Heart is not destined to be fully operational until the next great race – the 6<sup>th</sup>, when the intuitional faculty is due to be developed by man as a whole. As the Heart Centre, it obviously has a global function, but its particular job, is to raise energy from the Solar Plexus centre, to itself. In other words, to help man rise above his personal selfish desires and become more inclusive and selfless with the whole. From this angle, it has a special relationship with New York/ the USA, the hypothetical Solar Plexus centre. In the last decade or so, the USA has attempted to circumvent some of the humanitarian laws connected with Geneva and the United Nations, indicating that the flow between the global Heart and Solar Plexus is not yet flowing.

### 3. LONDON, THE THROAT CENTRE, DEVELOPMENT OF INTELLIGENT MIND.



1. The Ray 3 influence which flows through the Throat Chakra generally, is more pronounced in London than it is in New York or Tokyo. Ray 3 is the most busy and active ray and so is Gemini, the sign which rules London<sup>31</sup>. Throughout its history, London has been the most busy and active city – throwing its net wide to colonise, to trade, to plunder and populate. A great commercial centre, it is considered by some to be the number one financial centre in the world today<sup>32</sup>. Money is a 3<sup>rd</sup> Ray matter.
2. Ray 3 develops the intelligence, and Gemini is the communications sign. The British scholastic system – epitomised by the famous colleges Eton, Cambridge and Oxford, have set the standard for the western world. Another important fact which gives weight to London being the Throat Centre, is that the English language is undoubtedly the universal tongue. A symbol for the 3<sup>rd</sup> Ray is a net being thrown wide.
3. The Throat Centre is a transference centre<sup>33</sup> - receiving energies and passing them on, and London has been criss-crossed by many people and races throughout its long history. Additionally, its citizens are highly mobile, they are travellers, pioneers, merchants and traders. This centre is also a “fusing” centre, and London is the centre of a Commonwealth of Nations, fused from many disparate races.
4. Until relatively recently, England was the world’s superpower – a consequence of the Ray 1 Will and Power influence<sup>34</sup>. Even today it wields considerable clout internationally. The Tower of London, the ‘White Tower’, is a manifestation of this ray, and perhaps is a distorted reflection of Shamballa 35, the ‘White City’.

5. Saturn, a planet that rules law and order, which brings conservatism and control, rules the Throat Centre. “British reserve”, “keeping a stiff upper lip” - all Saturnian type qualities, are legendary in this people.

Saturn also rules Law and Order, and the Magna Carta (1215), the great Charter of Freedoms, is widely viewed as one of the most important legal documents in the history of democracy, and the basis upon which English Law is founded. Additionally, English Law is the system used in most Commonwealth countries and in the USA. It has set the standard for the ‘civilised’ world.

6. London’s exoteric motto - seen on its Coat of Arms is “Lord, guide us”. The esoteric motto is simply “I serve.”<sup>36</sup> Bailey said: “It is the service of the whole which is being attempted and at great cost.. Hence the fact that the governments of many nations found asylum in Great Britain during the war.”<sup>37</sup> The gathering in of people and nations who are suffering, is typically a Ray 2 function, and London has a Ray 2 soul.

Fighting for the higher principle came at a great cost. In fact challenging Germany to war, broke England economically. It became indebted to the USA. The act was a great sacrifice. Being willing to fight – and if necessary to die for a principle, is seen in London’s Coat of Arms. It has the St. George Cross at its centre. St. George reputedly was the martyred soldier of the church, and the cross is the universal symbol of sacrifice.



But there are also two powerful dragons present, and they are symbols of the Power Ray. This strength will be needed, because London's spiritual goal is to establish a world order of intelligent justice and fair economic distribution.

"The force which is centred in London is that of the first Ray of Will or Power in its building aspect.. the energy expressing itself through this powerful empire will be potent in establishing a world order of intelligent justice and a fair economic distribution. The keynote of this force is "I serve." <sup>38</sup>

7. London's Global Task: the energies of the lower chakras are subject to two stages of transference: from the sacral into the solar plexus (New York), then to the Throat Centre<sup>39</sup> (London); then the Throat Centre passes the energies on to the Ajna (Darjeeling). Not only does London have a special relationship with Darjeeling, it also has with New York/ the USA. There is a great trust and affection between these two nations – they both have their souls on the Love and Wisdom Ray. They are ashramic siblings. All this indicates that the transfer of energy from the Solar Plexus to the Throat is progressing well. London is doing its job.

#### 4. NEW YORK, THE SOLAR PLEXUS CENTRE, EMOTIONAL EXPRESSION



1. The astral Ray 6 flows through the Solar Plexus Centre. <sup>40</sup> It is the personality ray of the USA, and is the force centred in New York. <sup>41</sup> Compared to British reserve and oriental inscrutability, Americans are visibly the most emotional. This makes New York the outstanding favourite for the Solar Plexus Centre.
2. The astral plane is the "water plane", and the heart of New York – Manhattan, is surrounded by water. There is more water surrounding New York as a whole than any of the other cities.
3. New York is the place where two rivers meet (East and Hudson) and merge. Bailey refers to two streams of energy which meet and merge in the Solar Plexus.

The downpouring stream of life from the heart and the stream of life-giving energy from the spleen pass.. into the solar plexus region; from thence they are very definitely drawn together as one stream at a certain stage in the life of the advanced aspirant. <sup>42</sup>

4. The United States of America was the centre of old Atlantis, and it has inherited the psychic atmosphere and old religions - such as spiritualism, from that old continent. The Solar Plexus centre was developed in Atlantis, and it is not unreasonable to think that it would remain in the same region.

The spiritualistic movement.. started upon the American continent. The United States of America was the centre of old Atlantis and hence inherited a psychic and ancient religious form which was existent and potently alive in that part of the world for many centuries. <sup>43</sup>

5. The flaming beacon is a Ray 6 symbol – symbolising faith, hope and guidance. The Beacon of Hope, New York's Statue of Liberty, is the most famous beacon in the world. It is the perfect representation of the USA motto which is "I light the way. <sup>44</sup>" The goal for disciples on Ray Six, is to lead others to the light of love and wisdom and this destiny awaits the United States.



6. The solar plexus is a great clearing house. <sup>45</sup> The USA has taken millions of immigrants and refugees from other countries, absorbed them and expunged their pain and suffering.
7. Eventually, Solar Plexus Centre energy must be raised into the Heart Centre. The success of this can be gauged by the relationship between the USA and Geneva, and the USA and the United Nations, which has its largest office outside NY based in Geneva. We will know when global solar plexus energy is being successfully transferred to the Heart Chakra, when the US begins to seriously honour human rights laws and principles, in deed and act.
8. Bailey said that the Jewish Race symbolises the Solar Plexus Centre<sup>46</sup> in humanity, and this accounts for the strong attraction that New York (the Solar Plexus Centre of the planet) holds for Jews. According to a new American Jewish Year Book survey, there are currently 6.4 million Jews in the United States; about one million more than in Israel, and the greatest number live in New York - 1,618,000. <sup>47</sup> It is one of the world's major concentrations of Jewish population
9. The Solar Plexus Chakra has ten petals, the number on the pedestal of the Statue of Liberty.



10. Mars and Neptune govern the 6<sup>th</sup> Ray and also Piscean Age fundamentalist religions. Mars creates resentment and a desire to kill or defeat the “unbeliever”. This partially explains the war between the USA - with its powerful fundamentalist religions, and Muslim, another fundamentalist faith.

Bailey said: “The sixth Ray is either militant and active, or mystical, pacific and futile, and these two aspects at present condition the United States.”<sup>48</sup>”

11. Pluto functions in connection with the solar plexus <sup>49</sup> On the 11<sup>th</sup> of September 2001 the World Trade centre in New York was attacked by Al Qaida. This was powerfully reflected in the astrology chart of the USA (Independence Day chart, 5:10pm, 12 Sagittarius rising), with transit Pluto on the Ascendant, the soul purpose point. 9/11 was a Plutonic event. Pluto unleashes the destructive force of Ray 1, and we are told that Pluto begins to affect the Solar Plexus Chakra when a man (or humanity) is coming alive spiritually.

The symbology is clear. In one way or another, New York as the global Solar Plexus Centre, was destined to enter into “the smoke and darkness of Pluto” so that mankind as whole could live” in truth in the higher land of light <sup>50</sup>.” This is a great service and sacrifice which the USA made for humanity (6<sup>th</sup> ray and Neptune). It was a shame that the politicians of the day had a lower ray six reaction and retaliated with Mars (invasion of Iraq) – the non-sacred planet ruler of the solar plexus. It is to be hoped that the Obama administration will give respect to international law, and if so, this will be an indication that energy is being transferred to the global Heart Centre, Geneva.

12. New York’s Global Task: with New York as the hypothetical Solar Plexus centre, the USA’s important task is to exert a positive effect upon Tokyo/ Japan, the Sacral Centre; to fuse the lower chakra with itself. The relationship has been both difficult and special. They both have the reactive Idealism and Devotional Ray in their makeup, and while they fight, they are also drawn to each other. In WWII the fight for dominance between these two centres was finalised when the USA dropped an atom bomb on Japan. This was probably a re-enactment of a war in Atlantis. After the war Japan adopted many of America’s democratic principles and became more open and positively involved with the world community. This is evidence that Solar Plexus–Sacral fusion is taking place. The United States is helping to “lift” Japan, and the world, spiritually.





## 5. TOKYO, THE SACRAL CENTRE OF DESIRE AND SEX



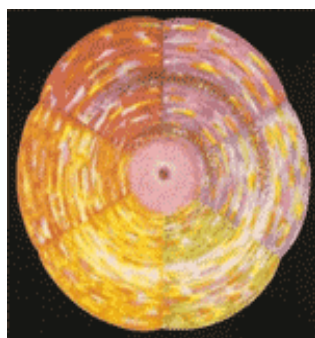
1. The Sacral is the most unevolved of the five chakras, and Japan as the only 4<sup>th</sup> Root Race lags behind the other chakra-countries in development. The rest are all 5<sup>th</sup> Root Race (mental focus). This means that the behaviour of the citizens of the Sacral Centre city and country, would in some way demonstrate less civilised behaviour – especially in the sexual area which this chakra rules. The brutality of Japan in WWII is well known and their treatment towards 'comfort women' is a good example of the misuse of the Sacral Centre.

'Comfort women' is a term applied to women who worked in Japanese military brothels... It is estimated that only 25 percent of the comfort women survived and that most were unable to have children as a consequence of the multiple rapes or the disease they contracted. ... Beatings and physical torture were said to be common.<sup>51</sup>

2. The Sacral Centre is ruled by Uranus, which shatters substance, and brings change and chaos. It has left its stamp on Tokyo:

The city has no center, no master plan. A city without a center, without a vision, Tokyo's only raison d'être is growth. And grow it has.. Though chaotic and unpredictable<sup>52</sup>

3. The Sacral Centre has six petals. The first picture is a clairvoyant's description of the centre and the second is Tokyo's flag – the sun sending out six rays. This makes a powerful connection between the Solar Plexus Centre and Tokyo.



4. The ray most commonly associated with the Sacral is the 7<sup>th</sup> Ray of physical manifestation, and its colour is purple, the background colour of the flag.
5. Tokyo's Global Task: on the broader stage, Tokyo's purpose is to continue to develop close ties with the United States particularly, and integrate more openly with the world community as a whole. Its individual task is to "rein in desire".

## **6. THE SIXTH AND SEVENTH CENTRES**

Bailey said that two centres (LH: the 6<sup>th</sup> and 7<sup>th</sup>) are relatively quiescent as far as any world effect is concerned, and that one will one day be found in Africa, and one in the region of Australia many millions of years later<sup>53</sup>.

The last two centres to be fully awakened are the Heart and the Head. The latter then fully opens the Base Centre and draws its energy up into itself. Geneva has already been named as the Heart Centre, and if this is correct it will come into its full power in the next round in the Sixth Root Race. This leaves the Head and Base Centre locations to be identified. The question then arises - which centre will be found in Australia and which in Africa?

### **On the surface it seems quite clear – Africa/ base; Australia/ head.**

The most undeveloped continent and people are found in Africa, and we are told that the base of the spine is practically entirely quiescent or undeveloped. Additionally, Africa is called the Cradle of Man and of Civilization. Man first walked here. It seems fitting that the lowest and most mysterious centre, housing the fire of matter – kundalini or serpent fire<sup>54</sup>, would be found on this dark and mysterious continent.

This would leave Australia to present the head centre. It is a suitable candidate. It is a modern western democracy, and is spiritually advanced - we are told that along with New Zealand and west USA, the 6<sup>th</sup> subrace of the Aryan Race is being founded there. So is an advanced esoteric school of meditation. The opening of the centre in Australia may be millions of years away yet, but the sort of development one would expect in the region surrounding the Crown Chakra - the avenue through which the Monad approaches the personality life, can be seen in the people of this southern continent.

### **Or could the reverse be the case? – Africa/ head; base/ Australia.**

The order of chakra unfoldment is the head centre first, and then finally the base is opened, which is when serpent fire or kundalini rises. Could this mean that the Head Centre will be found in Africa, and the Base in Australia? There is one compelling reason why this reversal may be correct, and it is called Uluru. To the Aborigines of Australia Uluru means "Serpent of the Rock".<sup>55</sup>



Uluru is a massive sandstone rock in central Australia that is sacred to the Aborigines of the area. Rising 346 meters high, with a circumference of 9.4 kilometers and covering an area of 3.33 square kilometers, Uluru is the single largest rock outcropping in Australia. It has a distinct red colour which is enhanced at sunset or dawn. Red is the colour commonly associated with the Base Chakra.

Australia is a remnant of the ancient land of Lemuria, upon which the 3<sup>rd</sup> Root Race lived<sup>56</sup>, and the Australian Aborigines are remnants of this Lemurian race<sup>57</sup>. Bailey said that in Lemuria days, the religion was based around the serpent, the result of the influence of the Dragon constellation.

It was the dragon-influence or "serpent energy" originating from "the constellation of the Dragon", which caused the influx of manasic or mind energy (Solar Angels) into the solar system, and the creation of the human race through "individualisation". This Dragon constellation is the Base Chakra of a cosmic Being. This influence resulted in the "serpent religion" and the "Serpents or Dragons of Wisdom" in Lemurian days. The religion "had to do with solar and planetary Kundalini, or serpent fire", the stimulation, and vitalisation of the fires of creation<sup>58</sup>.

Aboriginal myths tell of a powerful and dangerous serpent of sometimes enormous size who descended from that larger being visible as a dark streak in the milky-way. It reveals itself to people in this world as a rainbow as it moves through water and rain, bringing life, death and change<sup>59</sup>. To the people living around Uluru, it is the Intelligent Snake from the `higher spirit realms` who conjured up a great rainbow down which it slithered to earth. To them the snake symbolises fertility, and is the `father and mother` of all living creatures.<sup>60</sup>



There seems to be link between the serpent energy of the Dragon constellation (Base Chakra in the larger scheme), and with Australian Aborigines and their serpent myths and art, and with Uluru "The Serpent of the Rock" - a large red monolith rooted in the heartland

of Australia, a remnant of Lemuria. Is the global base chakra in Australia? Is Uluru the location from which planetary kundalini will arise in millions of years time?

Finally, and referring back to the Solar Plexus Chakra and its task of synthesising the lower two centres with itself. I mentioned the work being done between the USA and Japan, but I did not refer to the Base Centre. The relationship between and Australia (hypothetical Base) and the USA (Solar Plexus) is very close. If I am correct in my placement of chakra-cities, this is the way it should be.

### Regarding the Centre in Africa

Bailey said that Southern Africa (along with Southern America) will have its day in the next cycle <sup>61</sup>. That Africa "will take its place as a great centre of cultural light, shining within a civilized land. <sup>62</sup>" During this period presumably "several centuries ahead", Africa may become the seat of "the purest form of occult teaching and living. <sup>63</sup>" It seems quite plausible that Bailey could be referring to the location of the global Head Centre.

All this work is speculative, but I have tried to build on what I see to be evidence for my selections. I enjoyed the exercise. Hodgson

---

<sup>1</sup> Alice Bailey, Destiny of the Nations p92

<sup>2</sup> Alice Bailey, Destiny of the Nations p102

<sup>3</sup> Alice Bailey, Glamour a World Problem p149

<sup>4</sup> Alice Bailey, Esoteric Psychology vol. 2 p302

<sup>5</sup> Aryan used here refers to consciousness which is becoming intelligent.

<sup>6</sup> Alice Bailey, Destiny of the Nations p96

<sup>7</sup> Alice Bailey, Esoteric Psychology vol. 2 p339

<sup>8</sup> Alice Bailey, Esoteric Psychology vol. 2 p340

<sup>9</sup> Alice Bailey, Esoteric Astrology p454

<sup>10</sup> [Alice Bailey, Esoteric Healing p189](#)

<sup>11</sup> Alice Bailey, Destiny of the Nations p102

<sup>12</sup> Alice Bailey, Esoteric Psychology vol. 1 p218

<sup>13</sup> Alice Bailey, Esoteric Astrology p453

<sup>14</sup> Alice Bailey, Destiny of the Nations p93

<sup>15</sup> Alice Bailey, Esoteric Astrology p517

<sup>16</sup> Alice Bailey, Esoteric Astrology p127

<sup>17</sup> Alice Bailey, Destiny of the Nations p98

<sup>18</sup> Alice Bailey, Esoteric Healing p200

<sup>19</sup> Alice Bailey, Destiny of the Nations 98

<sup>20</sup> [Alice Bailey, Destiny of the Nations p98-9](#)

<sup>21</sup> Alice Bailey, Esoteric Psychology vol. 2 p521

<sup>22</sup> Alice Bailey, Destiny of the Nations p93

<sup>23</sup> Treatise on White Magic p276

<sup>24</sup> Alice Bailey, Externalisation of the Hierarchy p678

<sup>25</sup> Travel Guru's Mantras 20 March 2007.

<sup>26</sup> <http://www.exploredarjeeling.com/history.htm>

<sup>27</sup> Wikipedia

<sup>28</sup> Alice Bailey, Esoteric Healing p149

<sup>29</sup> Alice Bailey, Destiny of the Nations p97

<sup>30</sup> Ibid

<sup>31</sup> Alice Bailey, Destiny of the Nations p93

<sup>32</sup> [www.louisgroupint.com/.../financialservices200712/GlobalFinIndex.pdf](http://www.louisgroupint.com/.../financialservices200712/GlobalFinIndex.pdf)

<sup>33</sup> Alice Bailey, Esoteric Psychology vol. 2 p549

<sup>34</sup> Alice Bailey, Destiny of the Nations p97

<sup>35</sup> Alice Bailey, Externalisation of the Hierarchy p407 LH: the 1<sup>st</sup> Ray is associated with Shamballa.

<sup>36</sup> Alice Bailey, Destiny of the Nations p 97

<sup>37</sup> Ibid

<sup>38</sup> Ibid

<sup>39</sup> Alice Bailey, Esoteric Psychology vol. 2 p531

<sup>40</sup> Alice Bailey, Esoteric Astrology p517

<sup>41</sup> Alice Bailey, Destiny of the Nations p97

<sup>42</sup> Alice Bailey, Esoteric Psychology vol. 2 p65-6

<sup>43</sup> Alice Bailey, Destiny of the Nations p46

<sup>44</sup> Alice Bailey, Esoteric Astrology p523

<sup>45</sup> Alice Bailey, Esoteric Healing p127

<sup>46</sup> Alice Bailey, Externalisation of the Hierarchy p87

<sup>47</sup> <http://www.allbusiness.com/middle-east/israel/3993296-1.html>

<sup>48</sup> Destiny of the Nations p97-8

<sup>49</sup> Esoteric Astrology p78

<sup>50</sup> Ibid

<sup>51</sup> [http://en.wikipedia.org/wiki/Comfort\\_women#cite\\_ref-37](http://en.wikipedia.org/wiki/Comfort_women#cite_ref-37)

<sup>52</sup> <http://metropolis.co.jp/tokyofeaturestories/382/tokyofeaturestoriesinc.htm>

<sup>53</sup> Alice Bailey, Destiny of the Nations p96

<sup>54</sup> Alice Bailey, Treatise on Cosmic Fire p183

---

<sup>55</sup> [http://www.mysteriousaustralia.com/aboriginal\\_uru.html](http://www.mysteriousaustralia.com/aboriginal_uru.html)

<sup>56</sup> "Lemuria ... the present Australia is but a portion of it." Secret Doctrine p328. HPB.

<sup>57</sup> Helena Blavatsky, Secret Doctrine p328. "Behold the relics of.. Lemuria.. in some of the.. aborigines of Australia" (who) belong to the last remnants of the Seventh Sub- race of the Third (Race).

<sup>58</sup> Alice Bailey, Treatise on Cosmic Fire p1203-4

<sup>59</sup> Wikipedia.

<sup>60</sup> [http://www.religious-tourism.com/other\\_pilgrimages.htm](http://www.religious-tourism.com/other_pilgrimages.htm)

<sup>61</sup> Alice Bailey, Letters on Occult Meditation p309

<sup>62</sup> Alice Bailey, Problems of Humanity p110

<sup>63</sup> Alice Bailey, Problems of Humanity p107